

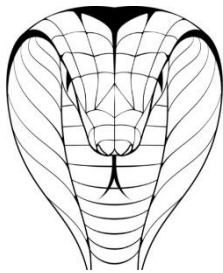


BRISTOL METROPOLITAN ACADEMY

***HIGH STANDARDS, HIGH ASPIRATIONS,
HIGH EXPECTATIONS***

Bristol Metropolitan Academy Uniform Policy 2024 - 2025

Communication



Discovery



Enterprise



Performance



High Standards, High Aspirations, High Expectations





Where can I buy the Bristol Met uniform?

All Bristol Met branded uniform can be purchased from Monkhouse

The local branch details are:

Monkhouse

140 East Street

Bedminster

Bristol

BS3 4EW

Tel: 0161 476 7216

Email: Bedminster.shop@monkhouse.com

Further details of prices, ordering and opening hours can be found on their website:

<https://www.monkhouse.com/>



High Standards, High Aspirations, High Expectations



High Expectations



Please ensure that all items of uniform are clearly marked with your name and tutor group.

Hair Styles

Bristol Metropolitan Academy supports The Halo Code - building a future without hair discrimination.

Jewellery

For health and safety reasons, only the following items of jewellery are permitted:

- A wrist watch
- Stud earrings (hoop/dangling earrings are not permitted)
- Facial piercings are **NOT** permitted other than a single small stud in the nose.

Students will be asked to remove additional items/piercings and parents will be asked to collect from Reception.

Make Up and Nails

Minimal natural makeup is permitted to be worn on a day to day basis. Nails need to be a safe and appropriate length. This is for health and safety reasons.

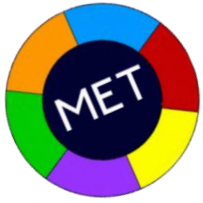
Outdoor Coats

Coats must not be worn inside the Academy building. Hoodies and coats worn inside will be confiscated and returned to students at the end of the day and parents informed.

If a student arrives at school with incorrect uniform, their Head of House / member of SLT or Principal may:

- (a) provide a change of uniform**
- (b) send the student to the ISR to work for the day.**
- (c) send the student home to correct the uniform, having first contacted the parents.**

The Principal's decision on acceptable uniform is final.



Main School Uniform Items

Academy Blazer (*optional until September 2025 when it will be phased out*). **You MUST wear either a blazer or a jumper.**



Blazer - Embroidered with academy logo on pocket. 100% woven polyester, Teflon-coated blazer. Machine washable.

Academy V-neck Jumper (*optional- will become compulsory from September 2025*). **You MUST wear either a blazer or a jumper.**



Jumper- Embroidered with academy logo on chest. 50% cotton and 50% Acrylic. Machine washable.

Shirts and Blouses



Shirt - White School Blouse or White School shirt must be able to be buttoned up to the collar. Long or short sleeved allowed.



Black pleated skirt (NOT jersey material). Can be bought from any outlet as long as they conform to our uniform standards.
Skirts must be worn to the knee, no shorter. For religious/cultural reasons, students are permitted to wear full length skirts to the ankle.

School Tie



Black straight leg or standard fit trousers (*Can be bought from any outlet as long as they conform to our uniform standards*).



Socks/Tights: Plain black, grey or dark blue socks or plain black/natural tights. Sock height must be anywhere above the ankle but below the knee.

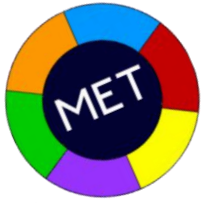
Shoes: Black. Students must wear shoes (not trainers, daps or boots)



Charcoal/Black Banner Bermuda Shorts. Belt loops, long leg style. Can be worn all year round. (*Can be bought from any outlet as long as they conform to our uniform standards*).

All permitted items are listed in this booklet. Any items not listed here are not allowed as part of the school uniform.

High Standards, High Aspirations, High Expectations



Core PE Kit

*Sports Polo

100% polyester technical fabric contrast panel polo shirt, embroidered with Academy logo on left breast



*Navy Tracksuit Pants

Plain navy track pant

*Navy Sports Shorts

Plain navy sports shorts



PE Quarter Zip, long sleeve top (Optional)

Contrast panel cotton/polyester zip neck long sleeve outdoor PE jersey, embroidered left breast with academy logo



Navy knee length sports socks (Optional)

Pro-weight quality sports socks. Cushioned sole



PE Hoodie (Optional)

Contrast panel hooded sweatshirt. Embroidered with Academy logo on left breast



Rugby Jersey (Optional)

Contrast panel technical fabric rugby jersey 100%

*Mandatory PE Kit

High Standards, High Aspirations, High Expectations





PE Trainers/Boots

PE Trainers:

For PE, students must have trainers with non-marking soles. These can be used in the sports halls and for some outside activity.

PE Boots:

Plastic or moulded, studded boots are needed for all students. These are used on the Astroturf and the field. We CANNOT allow students to use normal trainers on the field during the winter months due to health and safety.

Please note that Astroturf trainers are not plastic or moulded and CANNOT be used on the field. Metal studded boots are also not recommended as they CANNOT be used on the Astroturf.



Where to buy plastic or moulded studded boots:

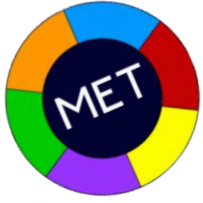
These can be purchased from most sports shops. You can shop online or in store at Sports Direct they have a range to choose from. There is also a local sports shop called Doug Hillard Sports on Fishponds Road.

SPORTS
DIRECT.COM

DOUG HILLARD
SPORTS.CO.UK

High Standards, High Aspirations, High Expectations





Acceptable Footwear

Examples of shoe styles that are acceptable and suitable to be worn with a school uniform. These shoes are smart and offer protection against spillages and other accidents in Science and Design & Technology in particular. Many brands say 'school wear'. Please check with us if unsure and keep the receipt.



Any form of raised heeled shoes is inappropriate for wearing to school. For safety reasons, please keep to type/style of shoes shown above.

High Standards, High Aspirations, High Expectations





Unacceptable Footwear

Unacceptable styles that must not be worn. For example, trainers, canvas daps or leather vans. There must be **no logo** on shoes or have trainer style soles. If you could not polish the shoe, it is unacceptable as school wear.



High Standards, High Aspirations, High Expectations





Examples of Permitted Trousers

Boot Leg Trousers
Straight Leg trousers



All trousers must be worn no lower than the waist. If they are too big then a belt must be worn to keep them on the waist.



Examples of Prohibited Trousers

The following items are an indicative gallery of prohibited items. They are not appropriate for school wear and must not be worn. As fashions change quickly, this gallery may not show all pictures of prohibited items. To be sure that you are purchasing appropriate school wear, please follow the guidance on page 4 for main school uniform items. Please make sure trousers are not made of stretchy material.



Jeans



Leggings /
Jeggings



Harem /
Baggy
Trousers



Chinos



Tight fitting trousers with big visible buckles, buttons or zips.

Trouser length must not be above the ankle.

High Standards, High Aspirations, High Expectations





School Trouser Guidance

The following information has been provided to help parents and carers in identifying what styles of trousers are suitable for school wear.

Our uniform policy clearly states that tight fitting trousers, leggings, shorts, cargo pants or fashion trousers of any kind are NOT permitted in school.

Whilst this is not designed to be an exhaustive list, and bearing in mind that shop stock and styles change, we hope that this guidance will be useful when purchasing school uniform items for your child.

If you choose to buy trousers from sources other than our recommended suppliers, please keep the receipt so items can be changed if they do not meet our uniform requirements.

Thank you in anticipation of your full support.

Recommended suppliers in this booklet include:

John Lewis

M&S

next

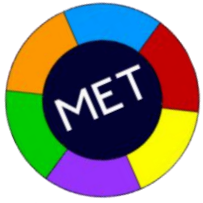
ASDA

MATALAN

TESCO

High Standards, High Aspirations, High Expectations



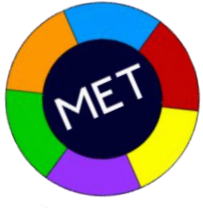


Recommended Suppliers for Trousers

Suppliers	Recommended Suppliers for School Trousers/Skirts
	Ask for the Bristol Metropolitan Academy approved skirt/trousers
M&S	Slim Leg Trousers Regular Leg Trousers
MATALAN	Classic School Trousers
	Regular Leg School Trousers Straight Leg School Trousers
next	Flat Front Trousers (3-16yrs) Standard Fit

High Standards, High Aspirations, High Expectations





Recommended Suppliers for Skirts

Suppliers	Recommended Suppliers for School Skirts
	Designer Pleated Skirt Black From £10
	50% Recycled Polyester 2 pack Adjustable Waist Black Pleated Skirts £8
	2 Pack Pleated Skirts (adjustable waist, permanent pleats) £13
	Black Waist Panel Permanent Pleats School Skirt £7

High Standards, High Aspirations, High Expectations



Uniform Price List

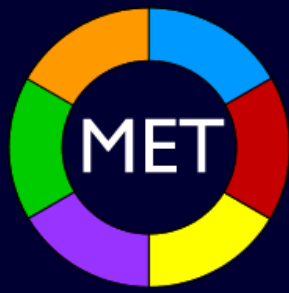
Item	Size	Price
Tie		£8.50
BMA Branded V-neck Jumper	28" and 30" chest	£22.50
	32" and 34" chest	£25.00
	36" and 38" chest	£27.25
	40", 42", 44", 46" chest	£33.25

PE Kit

Item	Size	Price	Item	Size	Price
Rugby Jersey	26/28, 30/32, 32/34, 34/36 inch chest	£30.75	PE Hoodie	28/30, 30/32, 32/34, 34/36 inch chest	£24.00
	38/40, 42/44, 46/48 inch chest	£37.00		38/40, 42/44, 46/48 inch chest	£31.75
P.E Quarter Zip, long sleeve top	28/30, 30/32, 32/34, 34/36 inch chest	£24	Sport Polo Top	28/30, 30/32, 32/34, 34/36 inch chest	£18.25
	38/40, 42/44, 46/48 inch chest	£31.75		38/40, 42/44, 46/48 inch chest	£22.25
P.E Shorts	Age 3-13	£6.00			
	S,M,L,XL	£7.25			

High Standards, High Aspirations, High Expectations





BRISTOL METROPOLITAN ACADEMY

**PLEASE KEEP THIS BOOKLET IN A SAFE PLACE
FOR FUTURE REFERENCE**

Published June 2024

The information contained in this booklet was correct at the time of publication but may be subject to change at any time.

High Standards, High Aspirations, High Expectations

