

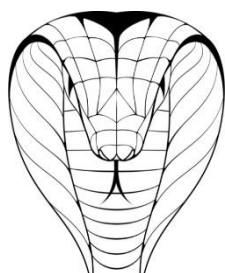


**BRISTOL
METROPOLITAN
ACADEMY**

***HIGH STANDARDS, HIGH ASPIRATIONS,
HIGH EXPECTATIONS***

Bristol Metropolitan Academy Uniform Policy 2023 - 2024

Communication



Discovery



Enterprise

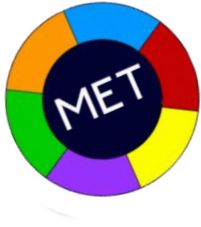


Performance



High Standards, High Aspirations, High Expectations





Where can I buy the Bristol Met uniform?

All Bristol Met branded uniform can be purchased from Monkhouse

The local branch details are:

Monkhouse

140 East Street

Bedminster

Bristol

BS3 4EW

Tel: 0161 476 7216

Email: Bedminster.shop@monkhouse.com

Further details of prices, ordering and opening hours can be found on their website:

<https://www.monkhouse.com/>



High Standards, High Aspirations, High Expectations





High Expectations

Please ensure that all items of uniform are clearly marked with your name and tutor group.

Hair Styles

Must be neat and tidy. Bristol Metropolitan Academy supports The Halo Code - building a future without hair discrimination.

Extremes of fashion must be avoided. Use of hair dye to achieve an unnatural, two-toned or bleached coloured look is **not** permitted.



Jewellery

For health and safety reasons and the general business like values of the Academy, only the following items of jewellery are permitted:

- A wrist watch
- **One** pair of plain stud earrings no bigger than 5mm in diameter
- Facial piercings are **NOT** permitted other than a single small stud in the nose. Students will be required to remove them if worn.

Make Up and Nails

Minimal natural makeup is permitted to be worn on a day to day basis.

False nails are **not** permitted at any time and students will be asked to get them removed if they come to school wearing them. Parents/Carers will be called and they will be sent home on the day to get them removed. This is for health and safety reasons.

Outdoor Coats

Coats must not be worn inside the Academy building. Hoodies and coats worn inside will be confiscated and returned to students at the end of the day and parents informed.

If a student arrives at school with incorrect uniform, their Head of House / member of SLT or Principal may:

- (a) provide a change of uniform**
- (b) send the student to the ISR to work for the day.**
- (c) send the student home to correct the uniform, having first contacted the parents.**

High Standards, High Aspirations, High Expectations





Main School Uniform Items

Academy Blazer



Blazer - Embroidered with academy logo on breast pocket. 100% woven polyester, Teflon-coated blazer. Machine washable.

Shirts and Blouses



Shirt - White School Blouse or White School shirt must be able to be buttoned up to the collar. Long or short sleeved allowed.



Black straight skirt with kick pleat at back. Back zip and fastening. Skirts must be no shorter than a closed hands width above the knee. Stretchy skirts are not permitted.

School Tie



Black straight leg or standard fit trousers

Socks/Tights: Plain black, grey or dark blue socks or plain black/natural tights. Sock height must be anywhere above the ankle but below the knee.

Shoes: Black. Students must wear shoes (not trainers, daps or boots)

Optional Item: V-neck pullover may be worn under blazer but **not** as an alternative and must be navy blue.

All permitted items are listed in this booklet. Any items not listed here are not allowed as part of the school uniform. If you wish to purchase trousers and school shoes from different suppliers, please follow the guidelines provided. To support you with this, we have compiled a gallery of permitted/prohibited items as examples

High Standards, High Aspirations, High Expectations





Core PE Kit

***Sports Polo**

100% polyester technical fabric contrast panel polo shirt, embroidered with Academy logo on left breast



***Navy Tracksuit**

Pants

Plain navy track pant

***Navy Sports Shorts**

Plain navy sports shorts



PE Quarter Zip, long sleeve top (Optional)

Contrast panel cotton/polyester zip neck long sleeve outdoor PE jersey, embroidered left breast with academy logo



Navy knee length sports socks (Optional)

Pro-weight quality sports socks. Cushioned sole



PE Hoodie (Optional)

Contrast panel hooded sweatshirt. Embroidered with Academy logo on left breast



Rugby Jersey (Optional)

Contrast panel technical fabric rugby jersey 100%

***Mandatory PE Kit**

High Standards, High Aspirations, High Expectations





PE Trainers/Boots

PE Trainers:

For P.E students must have trainers with non-marking soles. These can be used in the sports halls and for some outside activity.

PE Boots:

Plastic or moulded, studded boots are needed for all students. These are used on the Astroturf and the field. We CANNOT allow students to use normal trainers on the field during the winter months due to health and safety.

Please note that Astroturf trainers are not plastic or moulded and CANNOT be used on the field. Metal studded boots are also not recommended as they CANNOT be used on the Astroturf.



Where to buy plastic or moulded studded boots:

These can be purchased from most sports shops. You can shop online or in store at Sports Direct, they have a range to choose from. There is also a local sports shop called Doug Hillard Sports on Fishponds Road.

SPORTS
DIRECT.COM

DOUG HILLARD
SPORTS.CO.UK

High Standards, High Aspirations, High Expectations





Acceptable Footwear

Examples of shoe styles that are acceptable and suitable to be worn with a school uniform. These shoes are smart and offer protection against spillages and other accidents in Science and Design & Technology in particular. Many brands say 'school wear'. Please check with us if unsure.



Any form of raised heeled shoes is inappropriate for wearing to school. For safety reasons, please keep to type/style of shoes shown above.

High Standards, High Aspirations, High Expectations





Unacceptable Footwear

Unacceptable styles that must not be worn. For example, trainers, canvas daps or leather vans. There must be **no logo** on shoes or have trainer style soles. If you could not polish the shoe, it is unacceptable as school wear.



High Standards, High Aspirations, High Expectations



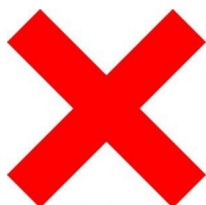


Examples of Permitted Trousers

Boot Leg Trousers
Straight Leg trousers



All trousers must be worn no lower than the waist. If they are too big then a belt must be worn to keep them on the waist.



Examples of Prohibited Trousers

The following items are an indicative gallery of prohibited items. They are not appropriate for school wear and must not be worn. As fashions change quickly, this gallery may not show all pictures of prohibited items. To be sure that you are purchasing appropriate school wear, please follow the guidance on page 4 for main school uniform items. Please make sure trousers are not made of stretchy material.



Jeans



Leggings /
Jeggings



Harem /
Baggy
Trousers



Chinos



Tight fitting trousers with big visible buckles, buttons or zips. In the style of 'Miss Sexy'

Trouser length must not be above the ankle.

High Standards, High Aspirations, High Expectations



School Trouser Guidance

The following information has been provided to help parents and carers in identifying what styles of trousers are suitable for school wear.

Our uniform policy clearly states that tight fitting trousers, leggings, shorts, cargo pants or fashion trousers of any kind are not permitted in school.

Whilst this is not designed to be an exhaustive list, and bearing in mind that shop stock and styles change, we hope that, this guidance will be useful when purchasing school uniform items for your child.

If you choose to buy trousers from sources other than our recommended suppliers, you run the risk of your choice being unacceptable and replacements needing to be purchased.

Thank you in anticipation of your full support.

Recommended suppliers in this booklet include:

John Lewis

M&S

next

ASDA

MATALAN

TESCO

High Standards, High Aspirations, High Expectations





Recommended Suppliers for Trousers

The items listed are all available on store websites

Suppliers	Recommended Suppliers for School Trousers/Skirts
	Ask for the Bristol Metropolitan Academy approved skirt/trousers
	Slim Leg Trousers Regular Leg Trousers
	Classic School Trousers
	Regular Leg School Trousers Straight Leg School Trousers
	Flat Front Trousers (3-16yrs) Standard Fit

High Standards, High Aspirations, High Expectations





Price List

Uniform

Item	Size	Price	Item	Size	Price
Blazer Left side button	24-28 inch chest	£30.00	Blazer Right side button	22-26 inch chest	£30.00
	30-32 inch chest	£35.50		28-32 inch chest	£35.50
	34-36 inch chest	£36.50		34-36 inch chest	£36.50
	38-54 inch chest	£43.00		38-54 inch chest	£43.00
Tie		£7.50	Skirt	22-38 inch waist	£19.75 - £25.75
V-neck Jumper	28-46 inch chest	£18.25 - £27.75			

PE Kit

Item	Size	Price	Item	Size	Price
Rugby Jersey	26/28, 30/32, 34/36 inch chest	£29.25	PE Hoodie	28/30, 30/32, 32/34, 34/36 inch chest	£21.00
	32/34 inch chest	£28.25		38/40, 42/44, 46/48 inch chest	£27.75
	38/40, 42/44, 46/48 inch chest	£33.75			
P.E Quarter Zip, long sleeve top	28/30, 30/32, 32/34, 34/36 inch chest	£21	Sport Polo Top	28/30, 30/32, 32/34, 34/36 inch chest	£16.00
	38/40, 42/44, 46/48 inch chest	£27.75		38/40, 42/44, 46/48 inch chest	£19.25
P.E Shorts	Age 3-13	£5.25			
	S,M,L,XL	£6.25			



**PLEASE KEEP THIS BOOKLET IN A SAFE PLACE
FOR FUTURE REFERENCE**

Published June 2023

The information contained in this booklet was correct at the time of publication but may be subject to change at any time.

High Standards, High Aspirations, High Expectations