



HIGH STANDARDS, HIGH ASPIRATIONS, HIGH EXPECTATIONS

23rd October 2024

If you would like to convert this letter into another language, please [visit this website](#).

Dear Parent/Carer,

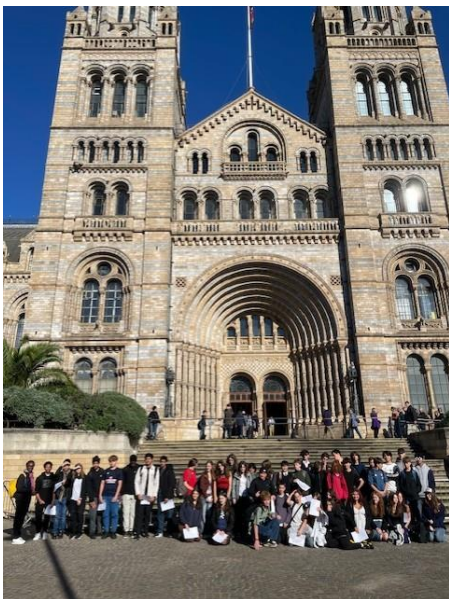
It is the end of this first (long) term. The summer break seems like a very long time ago now and I hope that all of our students are feeling really settled back into their daily routine. I hope that the promise I always make our Year 7 has come true (no longer getting lost) and that our Year 11 have faired well in their first round of assessments this year. I know that all students will be looking forward to some down time next week. Before students finish for the term break, a few messages and updates below.

Creative Callout to Families – We've recently had the fortune of a parent and skilled illustrator volunteering some time to



come and offer some workshops as part of the extra-curricular art programme. It has gotten the art and photography department thinking that there are potentially lots of amazing creative and skilled family members (parents, carers, aunts, uncles, grandparents...anyone) who may be willing to come and offer an insight into their area of expertise. If you think you could volunteer an hour (or more) to come and offer something then please do reach out to the department directly.

If your area of expertise is not related to Art or Photography but you think you could still offer insight into your area please do contact us on info@bristolmet.net and we will link you up with the most appropriate department. We would love to get more of our families involved and sharing their backgrounds and interests.



Y10 trip to Natural History Museum London – On Thursday 3rd and Friday 4th October over 100 students visited the Natural History Museum in London. A great time was had by all and exemplary behaviour from all students.

Opening of Ashley Down Train Station – On Friday 27th September Ashley Down Train Station re-opened for the first time in 60 years. 3 of our students: Iqra, Aisha and Safaa were chosen to be part of the opening ceremony as their Scout Group were part of a project to create artwork which will feature permanently within the station. We are very proud of the work they have produced. You can see them featured on BBC News [here](#).

Literacy Support for families - There is access to a free support resource from Nussy, as part of Dyslexia awareness month, for parents to support their understanding of dyslexia. It is a 2hr course that helps parents and carers better understand a young person's needs and how to support them. You have to sign up by 31st October for free access [on this link](#).



HIGH STANDARDS, HIGH ASPIRATIONS, HIGH EXPECTATIONS

Harry Potter Library Event – Last Thursday the Library welcomed students for the annual Harry Potter event. A great time was had by everyone with good games and refreshments. Please see below for upcoming events in the Library.



Students will be able to participate in the 'Bristol Teen Book Awards.' They will need to read 5 books and review them. There will be an award ceremony on the 13th February which families will be able to attend. This is open to any year group.



Next term, following requests from students, we will be running a Chess Tournament in the Library during social times. Students can sign up in the Library to participate.

Charlie and the Chocolate Factory - MET Productions celebrates it's 10 year anniversary with an upcoming epic



performance of 'Charlie & The Chocolate Factory'. The show launches end of November and we have had huge wider school and community input. Not only do we have over 100 students involved as cast and crew Yr. 7 - 11 but we have also had parents contributing things we need for the show, Yr. 7 and 8 Met Mastery art and DT students have been creating wonderful props for the set and it has been great to have parents and ex students come back offering to make and help build the set and also make props. The highly talented cast have been rehearsing since January 2024. **Tickets go on sale (on ParentPay) after October half term at £8** and we guarantee there will be 6 sell out evening performances. Our matinees are already fully booked with invited CLF primary and secondary school audiences. Thank you to everyone involved for making this show very special!



Parent Pay Orders - It is great to see that our stationery packs have been so popular since we launched them at the beginning of this term. With the growing demand of stationery packs, and other items we sell via Parent Pay, please can I request your assistance in asking your child(ren) to collect these pre-paid items from **Student Reception**. Once you have purchased an item(s) on the Parent Pay website we will prepare the order for the student to collect from student reception. If you would prefer to collect an order yourself from main reception, give us a call and this can be arranged.





HIGH STANDARDS, HIGH ASPIRATIONS, HIGH EXPECTATIONS

Careers Education Information, Advice and Guidance (CEIAG) - We are excited to highlight the Careers Education Information, Advice and Guidance (CEIAG) section of the school website. This section is designed to support you and your child as they explore future career paths, educational opportunities, and develop key skills for life beyond school. We encourage you to explore the CEIAG section to find out more about the careers offer within school and help you to guide your child to a successful future. <https://bristolmetropolitanacademy.clf.uk/curriculum/careers-education-information-advice-and-guidance/>

Driving on Academy Site // Parking in the community – We've had growing complaints from local residents recently around people parking inconsiderately in local roads. Particular concerns are parking on double yellow lines, on corners causing obstructions and obstructing driveways. Please could I ask that we are considerate of our community when dropping off and picking up from the Academy. Consider using car parks at Bingo, B&M/Iceland shopping area or Morrisons. These areas can be walked to in a few minutes by students exiting from our rear gates and reduce the need for parking in local roads. In addition, a number of families have raised similar concerns about parking on the Academy site but also the manner of driving of some users in the Academy car park. Members of the Academy site team will be starting to support enforcement of restrictions on the site. Please DO NOT park on the double yellow lines on the main hill/drive down the entrance or across the zebra crossings. Please also DO NOT park in the disabled bays unless you have a child who has that entitlement or someone who has that entitlement is parking to come into the Academy. If we can't work together to improve these standards then the next step would be closing the car park completely between 2:45pm and 3:15pm which is a step I would like to avoid taking. Thank you for your support.

I hope all of our families have a restful week ahead. A reminder that the next two days (Thursday & Friday) are INSET Days so are for Staff Only.

The Academy re-opens to all students on Monday 4th November at 8:10am and we look forward to seeing everyone back on that day.

Yours sincerely

Cameron Shaw
Principal