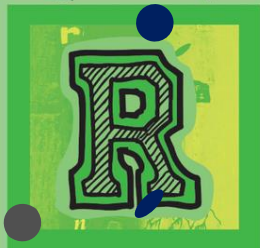


respectful



Resilient



compassionate



ambitious



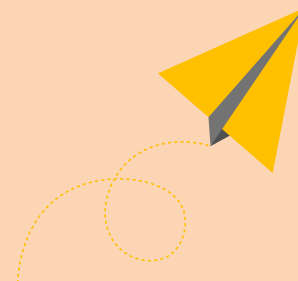
unified



# To Belong@MET

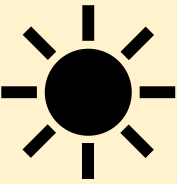
Daily @MET

21st to 25th August '23



# Summer School

21<sup>st</sup> to 25<sup>th</sup> August, 8.45 to 3pm



- **Free week-long Summer School places** available at Bristol Metropolitan Academy for PP students.
- **Value for money (£5 p/d) Summer School places** available for all students transitioning from KS2 up to KS3 @Met.
- **Free Hot Meals** to be provided **for all student** to give students a 'flavour' of what's available @Met.
- Staff assisted orientation sessions that develop students' **executive functional understanding the site.**
- A taste of BMA's **rewards focused culture** on a trip to Bristol tourist attraction the Bristol's SS Great Britain.
- A specialist adventure sports session and daily choice of healthy **sporting activities** available @Met.
- Qualified **English and Maths lead sessions** across the week.
- A qualified **BMA Forest Ranger to deliver Forest School activities.**
- BMA's **Mental Health Support Team** (NHS) delivering OTR Resilience Lab sessions.

resPectful



# Monday




- Orientation themed '*Respecting my academy environment*'
- Respecting myself and others drama session
- Respecting our environment using Maths session
- Sporting activity: student choice
- Forest School session

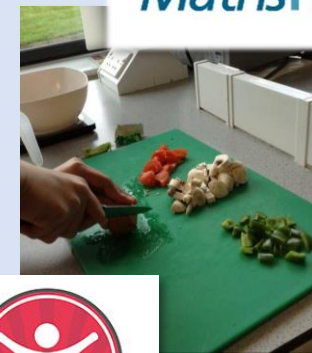




# Tuesday



- Orientation themed *'Reasons to be Proud at Met'*
- Resilience Lab by  Off The Record
- Resilient alternative sports on the climbing wall
- Resilient numeracy challenge
- BMA champions cooking session
- Sporting activity: student choice





# Wednesday



- Coach trip to tour SS Great Britain
- Sporting activity: student choice





# Thursday



- Orientation themed 'The Curriculum at Met'
- Celebrate our Ambition with a Pizza Party
- Make literacy leaps (opportunity to explore Year 7 English curriculum & how to use your knowledge organiser)
- Becoming Maths Wizards (opportunity to explore Year 7 English curriculum & how to use your knowledge organiser)
- Sporting activity: student choice



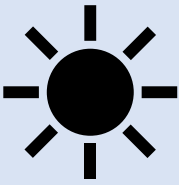


# Friday



- Orientation themed *Belonging@Met* and 'hanging our mural'
- Transition Mural workshop with Unique Voice
- Photographing BMA themed *Belonging@MET*
- Transitioning: creative writing workshop
- Sporting activity: student choice





# For parents

- Daily *second-hand uniform sale* from 3pm.
- Signposting for parents to Health/ Mental Health (both NHS) and social care support *daily @3pm* from BMA's pastoral team.
- Daily opportunity to *discuss any SEND concerns and develop a BMA Pupil Portrait* for your child with the Associate Assistant Principal for Inclusion Ms Phelps (NASENCo).





respectful



Resilient



compassionate



ambitious



unified



# To Belong@MET

Daily @MET

21st to 25th August '23

